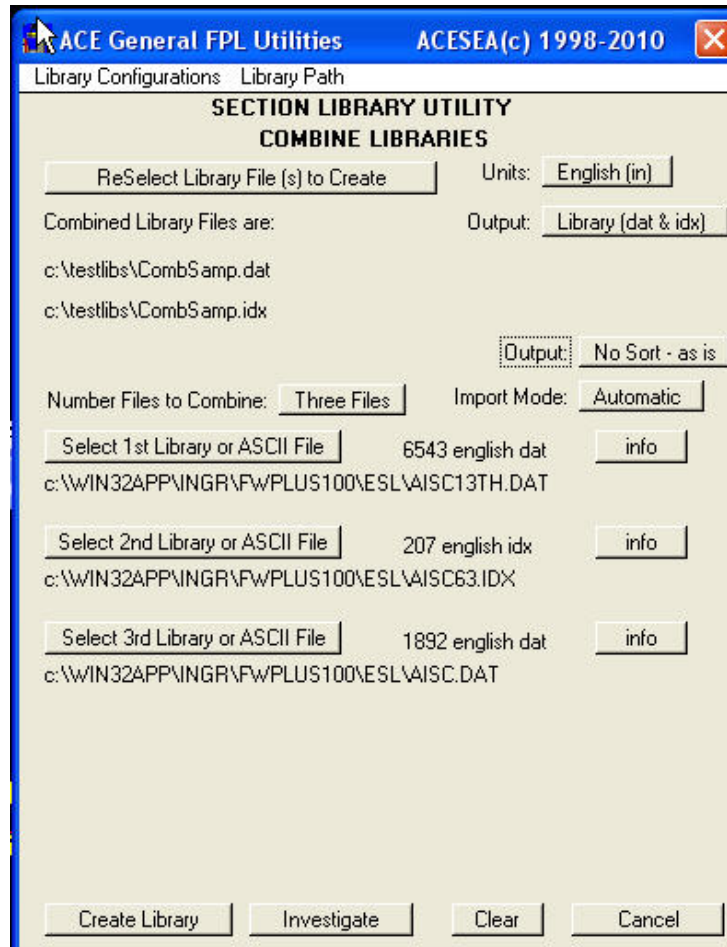


ACE Section Library Utilities Documentation

Combine Libraries Program (ACE_UCL.MA) (Current Versions - FWP 3.1.x.x/3.2.x.x rel 2.0.0 & FWP 7.0.x.x rel 7.0.0 & FWP 7.1/7.2/7.3 rel 6.0.0 & FWP 8.0.x.x rel 8.0.0 & FWP 9.0.x.x rel 9.0.0 & FWP 10.x.x rel 10.0.0)

The *Combine Libraries* application can be utilized to rapidly combine existing FrameWorks Plus section libraries. There can be as few as 1 library and as many as 5 section libraries. The source of each section library may be either a library file (supplied or user created), an ASCII text file (ACESEA format) or a library file w/o index file (.dat file only). The resultant combined library may be in English or Metric and may be output as either: idx, dat & txt; or txt; or .dat & idx. During the combining process the profile records are processed such that .dat and .idx files are compressed (new file with no deleted profiles). The files are always processed from the first library to the last (min 1 – max 5) library. If a same name (near match or exact match) duplicate profile is found, the later profile is discarded if the Import Mode is Automatic. If the mode is Interrogate, you must select to keep either the first profile or the second profile manually for each near match found. As the interrogate option can get very slow, there is an option to accept this profile and revert to automatic mode. Finally, the output may be ordered: as is (no sorting) or Reverse sort or Forward sort (see page 10).

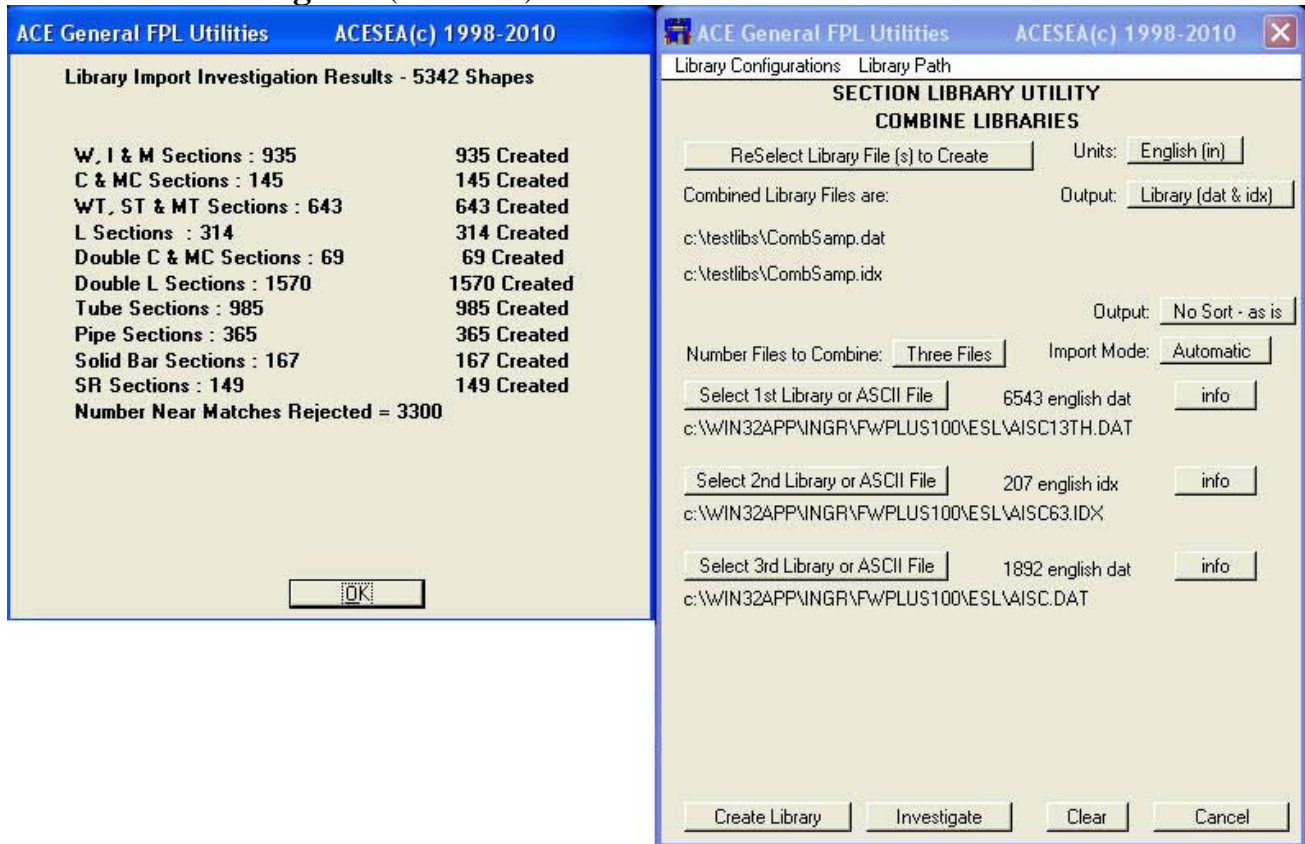


Combine Libraries Utility

This utility is utilized by first selecting from 1 to 5 libraries to be combined. Select the output units, output data file type(s), set output sorting & set import mode. The investigate option can be utilized to see what the combined file will be comprised of using the currently selected libraries & options. When ready, a combined section profile library file(s) can be output as a FWP library file (.dat & .idx) and/or a TXT file (.txt). The next page shows the results of the “Investigate” button for the above three libraries.

ACE Section Library Utilities Documentation

Combine Libraries Program (continued)



As can be seen for this case a total of 5342 profiles would be utilized to create a new library. A total of 3300 near matches (either a name match or an exact match) were rejected. When “Create Library” is pressed, the Combined Library file is written (a ASCII .res file is also written which contains info on rejected profiles & profile counts).

Output Sorting Options

There are three sorting option for the output file. The profiles are always sorted by type (WF, L etc), however this option provides sorting within types. Each sort techniques has it’s good and bad features.

No Sort – as is: In his case the record are written ordered by profile type and then by order it was encountered. This is probably the most logical sort technique.

Forward Sort: In his case the records are written ordered first by type and then sub-ordered with a forward alphabetical sort.

Reverse Sort: In his case the records are written ordered first by type and then sub-ordered with a reverse alphabetical sort.

Configuration & Library Path Options

Library Configurations: Library configurations can be saved/retrieved. A library configuration can contain any or all of the following: name & path of file to be created; name & path of up to 5 library file(s), ACE_LIB_PATH definition; output units, output file type(s), output sort mode and import mode. This can be especially useful if it is often necessary to combine a specific set of user libraries. Library configurations have an .lcf extension.

Library Path: A path to location of library configuration files. The path can be defined with the variable ACE_LIB_PATH or it can be defined interactively. This is also the initial path to search for libraries and to deposit the combined library files. This variable is stored in LCF file if it is defined when LCF is saved.